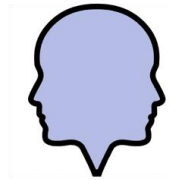


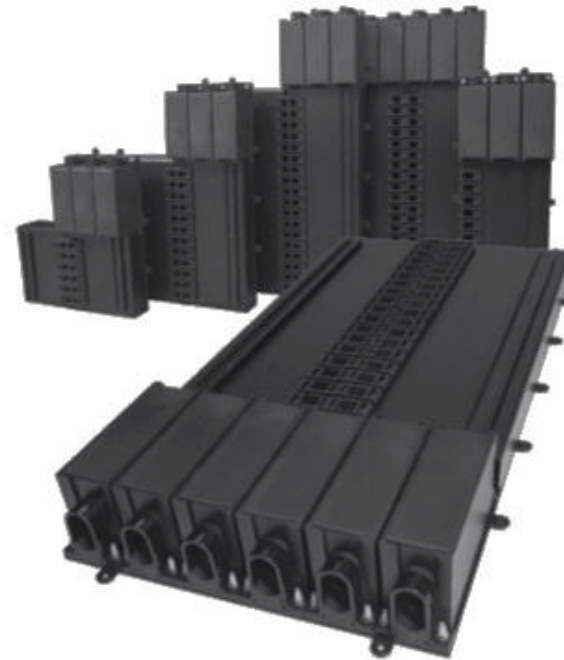
# cULus 67 PANELBOARD

## PRODUCT OVERVIEW

# JANUS



Innovative Power  
Distribution



**B**USSWORKS

# JANUS

## What's in a name?

JANUS



### Why brand an electrical product JANUS?

**JANUS** was a god of Roman mythology with two faces looking in opposite directions. The god symbolized the transition point between the past and the future.

The introduction of Bussworks' **JANUS** power distribution system also represents a transition point for the electrical industry. It is a point where distribution systems have an "open architecture" compatible with all available breakers, regardless of the manufacturer.

Traditional power distribution systems are designed by manufacturers to only use one type of breaker. This forces the customer into a relationship with only one breaker manufacturer for the life of their product. Sole source products of this type limit competition, stifle innovation, and inflate market prices.

**Bussworks developed JANUS to change the sole source power distribution and breaker sales paradigm.**

JANUS is what happens when an independent company designs a panelboard to be compatible with all Molded Case Breakers and Miniature Circuit Breakers on the market.

# JANUS

## Specification

### Mechanical Characteristics

US Patent Number	9,197,039 and 9,293,897
cULus Certification	E472864 UL67 and CSA22.2 E494273 UL508 and CSA22.2
IEC Certification	IEC60529 IP20
Touchsafe Design	Personnel have no exposure to energized components during servicing or operating any portion of the system

### Electrical Characteristics

System Ampacity	150A, 225A Certified (400A, 600A, 800A in process)
Branch Circuit Ampacity	32A, 63A, 100A
Voltage Rating	120, 240, 277, 480, 575, 600VAC & 24VDC
Voltage Type	Delta or Wye / 1ph or 3ph / 2,3, or 4 wire
Withstand	10kA (Higher ratings available upon request)
Neutral	100% or 200% / Linear or Non-linear Loads

### Configurations

Enclosure	UL50 Type 1
Interior Only	Available as Single Unit
Main Incoming	Main Lug or Main Breaker
Single Cable	#4-4/0 Compression Lug
Single Cable	#4-4/0 Crimp Lug
Parallel Cables	#8-1/0 Compression Lug
Parallel Cables	#8-1/0 Crimp Lug
Branch Configuration	Single or Double Column
Circuits	12, 24, 36, 42, 72



# JANUS

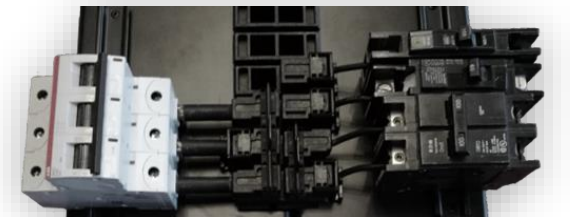
## Compatibility

### Main Incoming Molded Case Breakers

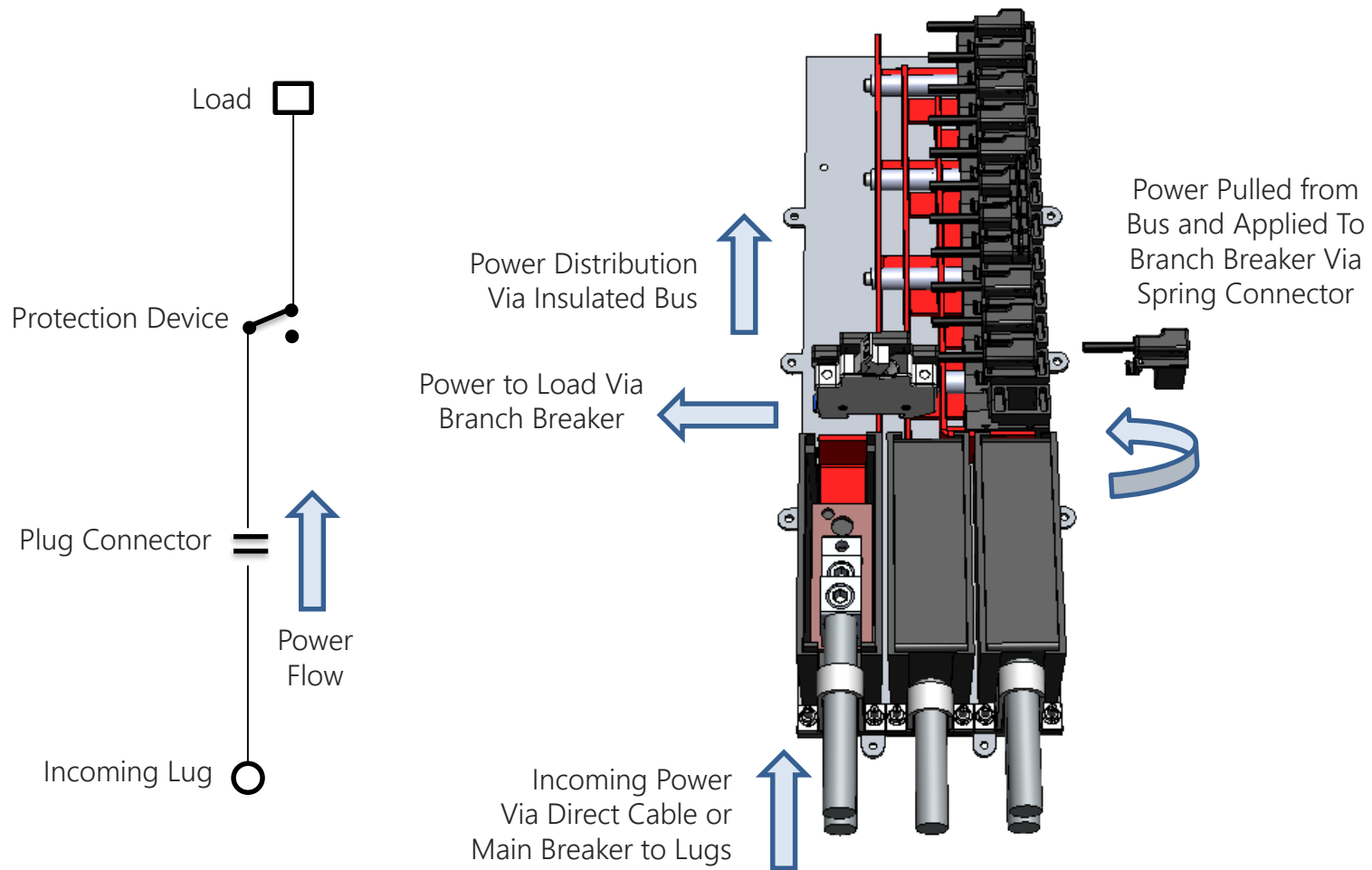
Schneider-SqD, Eaton-Cutler Hammer, Siemens, GE, ABB, Rockwell, WEG, LG/LS, Noark

### Branch Miniature Circuit Breakers

ABB	S200U	Rockwell	MCA/MCB/MCEA/MCGA
ABB	S200UP	Rockwell	1489M
ABB	SU200M	Schneider	Multi 9 C120
ABB	S800U	Schneider	Multi 9 C60
Altech	L	Siemens	5SJ4 HG41
Altech	UL	Siemens	5SJ4 HG42
Carlo Gavazzi	GMB	Siemens	BQ/BQH/HQB
Carlo Gavazzi	GMBH	Sprecher + Schuh	L9
CBI	QL	SqD	QOU
Eaton	FAZ	Techna	Jtec
Eaton	QC/QCD/QCR/QCGF	WEG	UMBW
ETA	4230	Weidmuller	BR
GE	TQC/THQC/THHQC		
GE/AEG	EP 100ULH		
Nader	NDB2T		
Noark	B1H		
Noark	B1N		

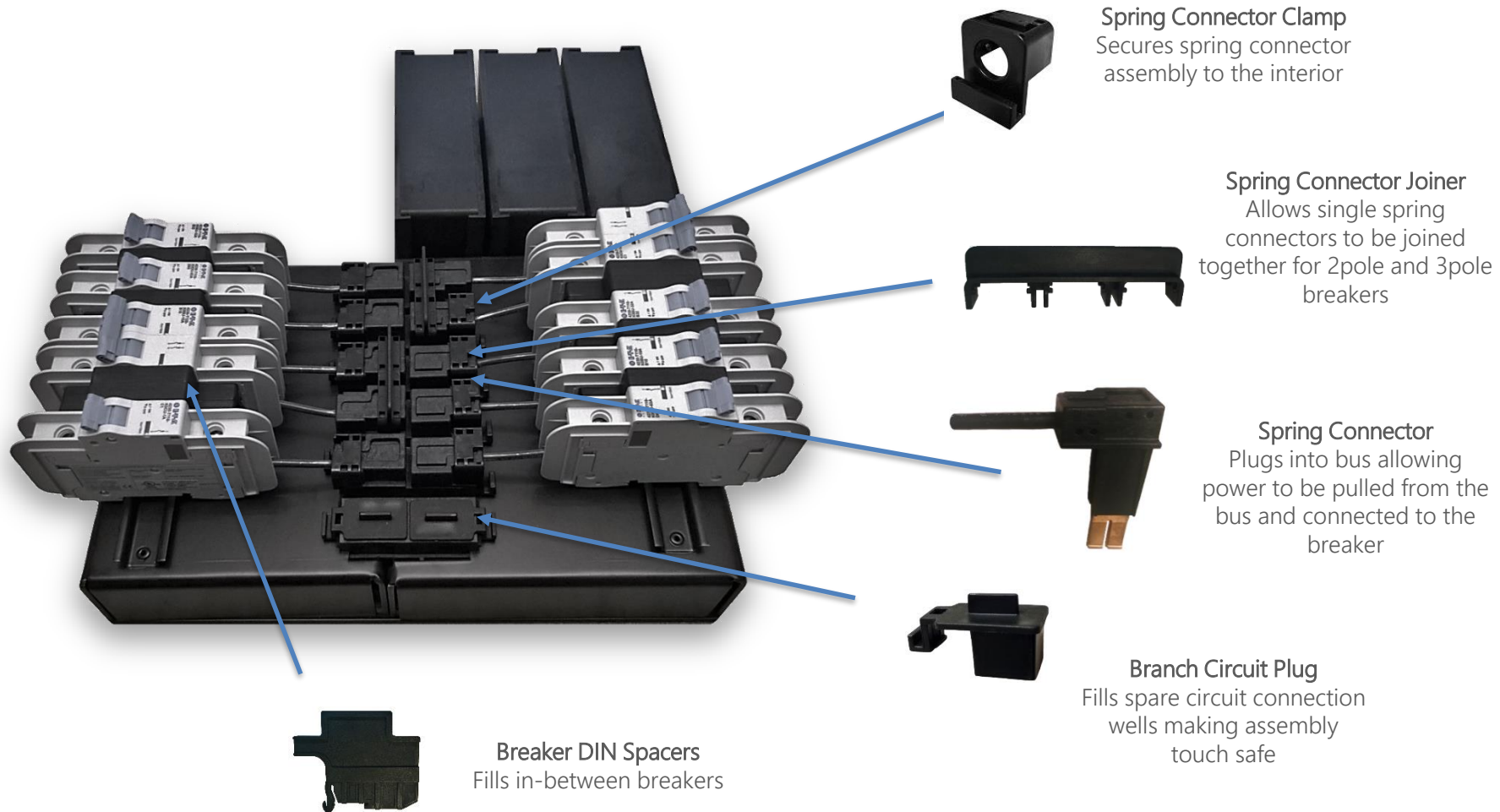


# JANUS Operation



# JANUS

## Operation



# JANUS

## Configurations

**Product Series**

**JANUS**

**Type**

- I Interior Only
- EE Enclosed Assembly - Euro IEC Style Breakers
- EU Enclosed Assembly - US NEMA Style Breakers

**Ampacity**

- 1 150 Amp
- 2 225 Amp

**Main Lug Incoming**

- 6M Single Mechanical Lugs
- 3M Parallel Mechanical Lugs
- 3C Parallel Compression Lugs

**Configuration**

- S Single Column
- D Double Column

**Bus Bar**

- 2 A and B Phase
- 3 A, B, and C Phase

**Circuits**

- 12 Circuits
- 24 Circuits
- 36 Circuits
- 42 Circuits
- 72 Circuits

J I 2 3C D 3 36

### Configurability

The system is sold in standard configurations 12, 24, 36, 42, and 72 to correspond with existing competing systems.

JANUS is the only UL67 panelboard that is configurable. Any multiples of circuits are available due to system modularity.

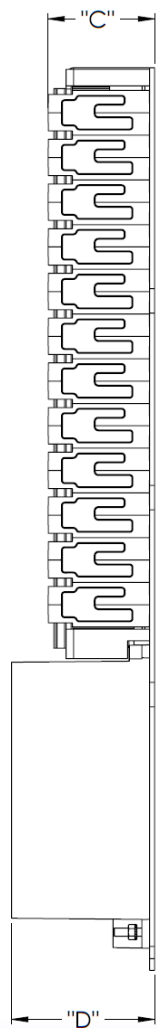
Example: 13 circuit double sided.



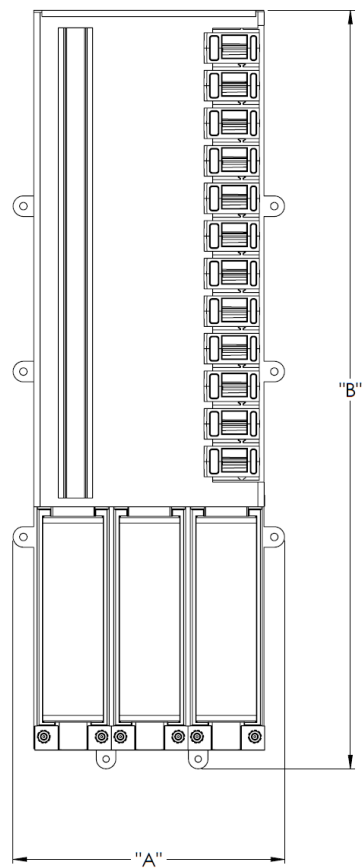
**Note**  
~ 150A assembly single column only.  
~ Single column assembly 12, 24, and 36 circuit only.

# JANUS

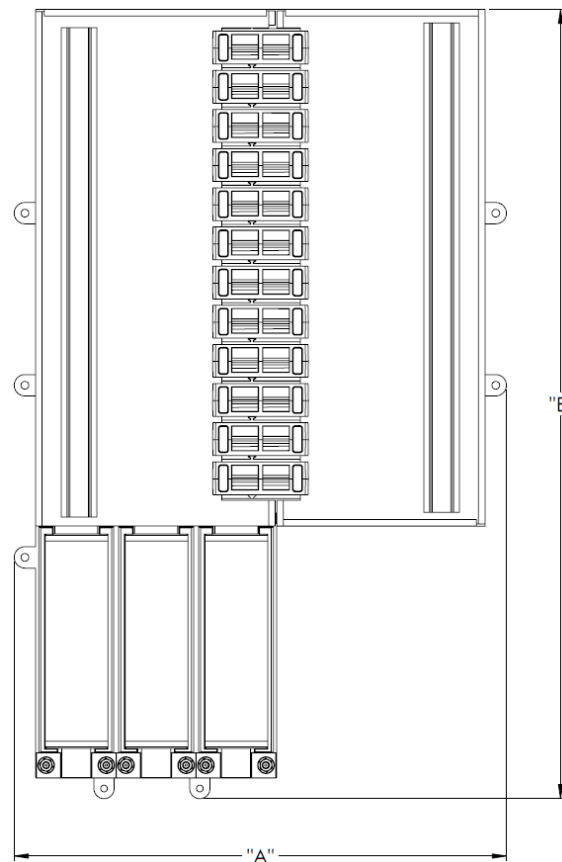
## Dimensions – Interior Only



Single Sided



Double Sided



Single Sided

Circuit	A	B	C	D
12	7.5 in	22.0 in	2.5 in	3.5 in
24	7.5 in	35.0 in	2.5 in	3.5 in
36	7.5 in	48.0 in	2.5 in	3.5 in
42	7.5 in	61.0 in	2.5 in	3.5 in

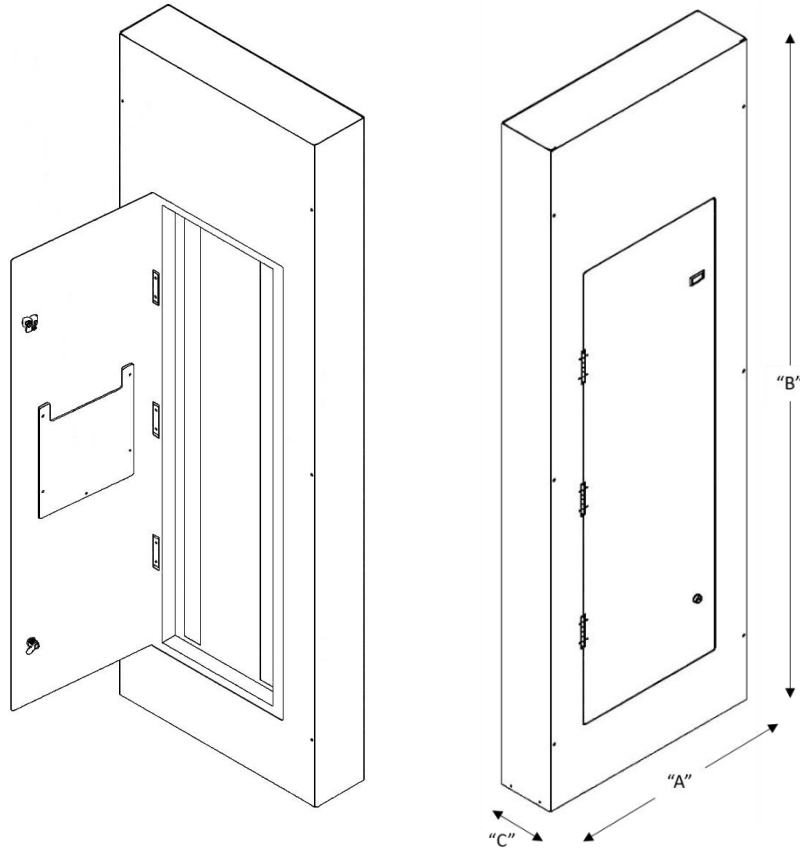
Double Sided

Circuit	A	B	C	D
12	14.5 in	15.5 in	2.5 in	3.5 in
24	14.5 in	22.0 in	2.5 in	3.5 in
36	14.5 in	28.5 in	2.5 in	3.5 in
42	14.5 in	35.0 in	2.5 in	3.5 in
72	14.5 in	48.0 in	2.5 in	3.5 in



# JANUS

## Dimensions –Exterior Only



### Single Sided

Circuit	A	B	C
12	17.0 in	38.5 in	6.0 in
24	17.0 in	51.5 in	6.0 in
36	17.0 in	64.5 in	6.0 in
42	17.0 in	77.5 in	6.0 in

### Double Sided

Circuit	A	B	C
12	24.0 in	32.0 in	6.0 in
24	24.0 in	38.5 in	6.0 in
36	24.0 in	45.0 in	6.0 in
42	24.0 in	51.5 in	6.0 in
72	24.0 in	64.5 in	6.0 in

*BUSSWORKS*

JANUS



THE MOST FLEXIBLE, FEATURE RICH,  
TOUCH SAFE PANELBOARD